



Ranch Sorting National Championships

***RSNC FarmTek Timer
Instruction and User Manual
Horn Handicap Feature***

Ranch Sorting National Championships

PO Box 1

Wellington, CO 80549

Phone: 970-897-2901

Fax: 970-897-2921

Email: Info@RSNC.US

Web Site: www.ranchsorting.com

Prerequisites:

1. You must obtain the special RSNC timer interface cable from FarmTek. It has two leads, one connects to the “Input” jack on the FarmTek console, the other connects to the “Output” jack. The cable that connects to the Output jack is labeled with an “O” for Output. The cable which connects to the Input jack is not marked. If the label on the output cable is missing, you will be able to determine which cable is which later in these instructions.
2. Your FarmTek Polaris console must be updated with new software. Contact FarmTek to make these arrangements.
3. You must have Build 3229 or later of the RSNC software.
4. You must check “Set Timer Horn Times” in the RSNC “Classes and Options” settings. See example below:

Ranch Sorting National Championships Software Options Maintenance

Producer:

Arena:

| Class Name |
|-------------------------------|
| All Levels Handicap |
| # 15 Handicap |
| # 14 Handicap |
| # 14 Ranch Hand HC |
| # 13 Handicap |
| # 12 Handicap |
| # 11 Handicap |
| # 11 RH HC (4 cap sorter) |
| # 11 Rookie HC (2 cap sorter) |
| # 10 Handicap |

☒ Classes 1-10 ☐ Placings Only
☐ Classes 11-20 ☐ Show All Riders
☐ Classes 21-30

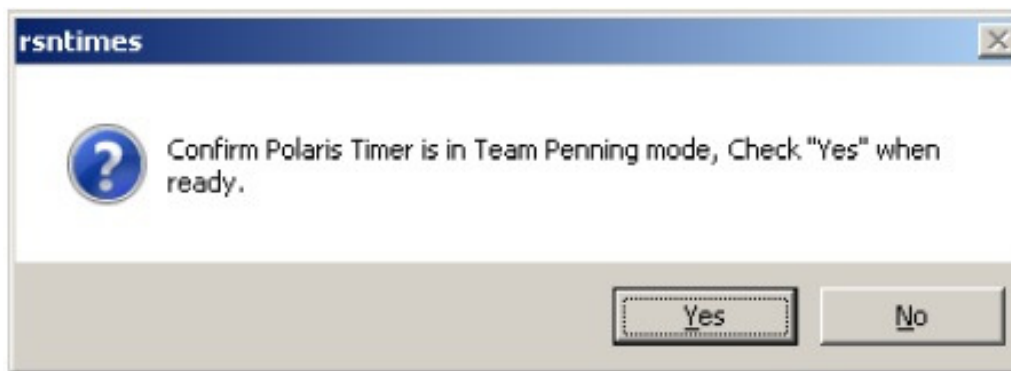
☐ No Color Print Timer Port:
☐ Sign Checks ☒ Set Timer Horn Times
☐ Bold Checks
☐ 3-Up Checks

Processing Fee:

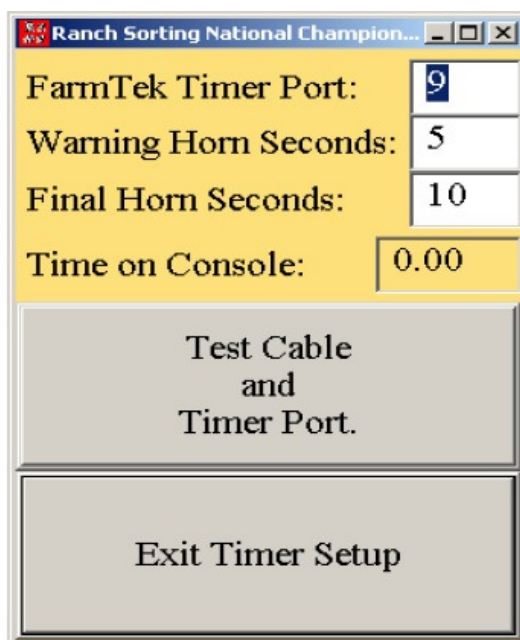
| Ledger Name |
|-------------------|
| Stalls |
| Shavings |
| RV |
| Clinics |
| Pre-entry money |
| Magazine fee \$10 |
| Reserved 3 |

Once the following test is successful, each team will have their horn times adjusted to correspond with their handicap, so that the warning horn will sound 30 seconds prior to their time expiring and the final horn will sound when their time has expired.

When you are ready to run a class, click on “Post Times from Timer” in the main menu. The first thing you will see is a screen like this:



Confirm that the timer is set up correctly and the cables are plugged in, then click “Yes”. The next thing you will see is a screen like this:



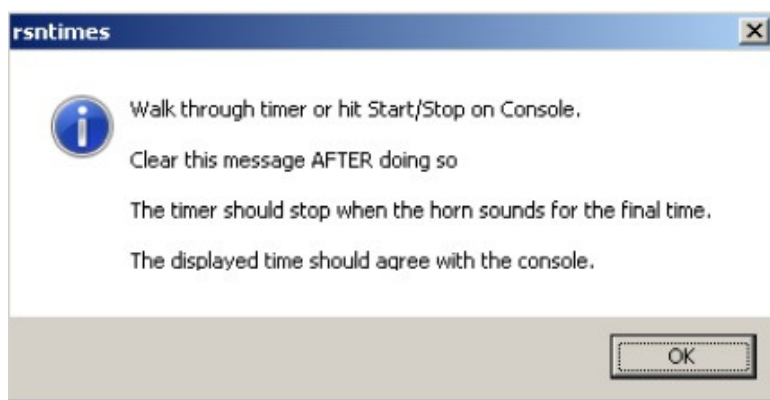
FarmTek Timer Port: is the port the timer will use on this computer. See the Trouble shooting Guide on page 5 for instructions on how to determine the port number.

Warning Horn Seconds: is the number of seconds before the Final horn sounds that the Warning horn will sound. For this test, it is set at 5 seconds, but you may change it if you wish. It cannot be a greater value than the Final Horn Seconds value.

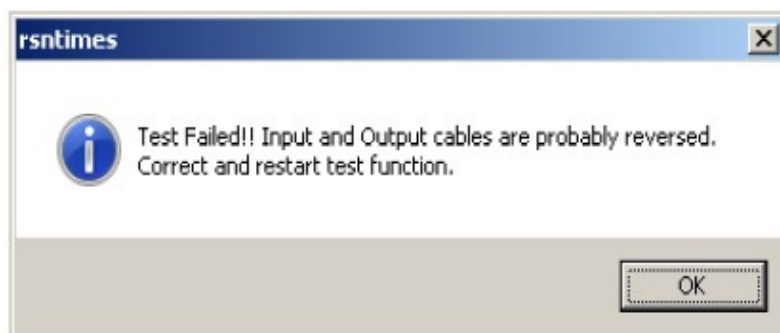
Final Horn Seconds: is the number of seconds before the Final horn sounds. This is the time allowed for the sorting. In this test, the Final horn will sound after 10 seconds has elapsed. You may change this value if you wish, but it must be greater than the Warning Horn Seconds value.

Time on Console: When the test has completed successfully, this value will agree with the time on the FarmTek console.

Once all values are set correctly, click on “Test Cable and Timer Port”. The next thing you will see is a screen like this:



Follow the instructions. As soon as the timer has started, click “OK”. If the test is successful, when the “Final Horn Time” has elapsed, the time on the screen will be updated to agree with the display on the console. If the test was not successful, you will see the following message:



The usual cause for this message is that the input and output cables to the console are reversed. Swap the cables and run the test again. FarmTek recommends turning the timer off before unplugging the cables, so you should do that, then restart the

test. Once the test is successful, mark the cables with tape or something similar so you know the correct sequence in the future.

Trouble Shooting

If you need to find out what port that you are using you can find it by following these directions. Depending on the way your computer is set up you may not need to follow exactly but this will help you to find out where to go.

1. Start button
2. Go to Settings
3. Go to Control Panel
4. Go to Systems
5. Go to Hardware
6. Find Device Manager and click on it.
7. Find the Ports and click the (+) beside it.

This will give you all the ports that are on your computer. You will have to try them one by one to see which one the timer is connected to. Insert that number into the software.

Go to RSNC Software

Click on Classes and Options

Type in the number that had a “+” beside it, for example it is 4.

Then click the box next to Set Timer Horn Times. Then click Exit and Save.

Ranch Sorting National Championships Software Options Maintenance

Producer: Valerie (Val) Rodriguez

Arena: Y'all Comeback Arena Boot Hill

| Class Name | Options | Timer Port | Processing Fee | Ledger Name | Buttons |
|-------------------------------|--|------------|----------------|-------------|--|
| All Levels Handicap | <input type="checkbox"/> No Color Print | 4 | 0.00 | Stalls | <input checked="" type="checkbox"/> Set Timer Horn Times Change Table 1 Payout Percentages Change Table 2 Payout Percentages Change Table 3 Payout Percentages Exit and Save |
| # 15 Handicap | <input type="checkbox"/> Sign Checks | | | Shavings | |
| # 14 Handicap | <input type="checkbox"/> Bold Checks | | | RV | |
| # 14 Ranch Hand HC | <input type="checkbox"/> 3-Up Checks | | | Clinics | |
| # 13 Handicap | | | | Reserved 1 | |
| # 12 Handicap | | | | Reserved 2 | |
| # 11 Handicap | | | | Reserved 3 | |
| # 11 RH HC (4 cap sorter) | <input checked="" type="checkbox"/> Classes 1-10 | | | | |
| # 11 Rookie HC (2 cap sorter) | <input type="checkbox"/> Placings Only | | | | |
| # 10 Handicap | <input type="checkbox"/> Classes 11-20 | | | | |
| | <input type="checkbox"/> Classes 21-30 | | | | |
| | <input type="checkbox"/> Show All Riders | | | | |

Hit set up, hit next, want format set final horn, enter 76, then hit enter

Does it say team penning again,

FarmTek Timer Port: 4

Warning Horn Seconds : 5

Final Horn Seconds: 10

Time on Console: 0.00